

Clarke®



PRESSURISED PAINT CONTAINER

MODEL NO: CPP2B

PART NO: 3082115

OPERATION & MAINTENANCE INSTRUCTIONS

ORIGINAL INSTRUCTIONS

GC0122 - REV 1

INTRODUCTION

Thank you for purchasing this CLARKE Pressurised Paint Container.

Before attempting to use this product, please read this manual thoroughly and follow the instructions carefully. In doing so you will ensure the safety of yourself and that of others around you, and you can look forward to your purchase giving you long and satisfactory service.

IMPORTANT

Please read all of the safety and operating instructions carefully before using this product. Please pay particular attention to all sections of these instructions that display warning symbols and notices.



WARNING: THIS SYMBOL IS USED THROUGHOUT THE USER GUIDE WHENEVER THERE IS A RISK OF PERSONAL INJURY. ENSURE THAT THESE WARNINGS ARE READ AND UNDERSTOOD AT ALL TIMES.

GUARANTEE

This product is guaranteed against faulty manufacture for a period of 12 months from the date of purchase. Please keep your receipt which will be required as proof of purchase.

This guarantee is invalid if the product is found to have been abused or tampered with in any way, or not used for the purpose for which it was intended.

Faulty goods should be returned to their place of purchase, no product can be returned to us without prior permission.

This guarantee does not effect your statutory rights.

GENERAL SAFETY RULES

Before using this equipment it is in your own interest to read and pay attention to the following safety rules.

1. Keep the work area clean. Cluttered areas invite injuries. Keep the work area well lit.
2. Keep children away. Children must never be allowed in the work area.
3. Store idle equipment. When not in use, tools must be locked up in a dry location. Always lock up tools and keep out of reach of children.
4. Use eye protection. Always wear approved impact safety goggles.
5. Stay alert. Watch what you are doing, use common sense. Do not operate any tool when you are tired.
6. Check for damaged parts. Before using any tool or equipment, any part that appears damaged should be carefully checked to determine that it will operate properly and perform its intended function.
7. Do not operate the equipment if under the influence of alcohol or drugs. If there is any doubt, do not operate the equipment.

COMPRESSED AIR EQUIPMENT

1. Compressed air can be dangerous. Ensure that you are thoroughly familiar with all precautions relating to the use of compressors and a compressed air supply.
2. Never direct a jet of compressed air at people or animals.
3. Always ensure that the equipment being used has a safe working pressure exceeding the output pressure of the compressor that it is connected to.
4. Always ensure that the air supply is turned off at the tool outlet and vent all compressed air from within the air hose and the equipment attached to it, before disconnecting air hoses or other equipment from your compressor.
5. Ensure all fixed air connections are properly sealed using teflon tape or pipe sealant.

PAINT SPRAYING EQUIPMENT

We strongly recommend that paint spraying equipment be used in conjunction with appropriate eye and face protecting goggles, glasses or spray masks, available from most DIY and hardware stores.

1. Always keep the equipment perfectly clean. This will not only prolong its life, but will also ensure you get the best results. See `Maintenance.

2. Always ensure there is adequate ventilation. Do not spray or handle paint in enclosed areas.
3. Never spray close to any source of heat or flame.
4. Always wear a suitable approved breathing mask when spraying, to protect against inhalation of paint spray or fumes. An air fed mask may be required when spraying some types of toxic paint. If in doubt, check with the paint manufacturer.
5. Always check the manufacturer's data sheets for the paint products being sprayed for any particular hazards and follow the manufacturer's instructions. Take particular care if spraying isocyanate paints. Products used in a spray gun may be covered by COSHH Regulations.
6. Always disconnect the spray gun from the air supply when it is not in use, and before any disassembly.
7. Never spray paint towards people or animals.
8. In the case of injury, seek expert medical advice immediately. Never smoke while spraying or preparing paints, or spray near a naked flame, heat source and electrical sparks. Many paints are flammable.
9. Never tamper with, or attempt to adjust the safety valve.
10. Never tamper with the product or modify it in any way, as this could prove to be dangerous and will invalidate the guarantee. Only use the product for the purpose for which it is intended.
11. When replacing parts, only use those supplied by Clarke International as shown by the parts list on page 10.

PRODUCT OVERVIEW



NO	DESCRIPTION
1	Carrying / Support Handle
2	Air Pressure Gauge
3	Air Adjusting Screw
4	Regulator
5	Air Inlet
6	Vent Valve

NO	DESCRIPTION
7	Air Outlet Hose (orange)
8	Paint Delivery Hose (black)
9	Safety Valve
10	Air Outlet
11	Paint Shut-off Valve

AIR SUPPLY

The air supply pressure to the container should be clean and not be greater than 80 psi. Higher pressure or contaminated air will shorten the spray gun life because of faster wear, and could become a safety hazard.

Water in the airline will also cause damage and may contaminate the paint being used. Ensure the air supply is properly filtered.

The recommended procedure to connect the container to an air supply is described below. A filter/regulator should always be incorporated in the air supply line.

The air inlet used for connecting air supply has a standard ¼" BSP thread.

Airline pressure, or supply hose inside diameter, should be increased to compensate for unusually long air hoses (over 10 m). The minimum hose diameter should be 6mm (¼") ID and fittings should have the same internal dimensions.

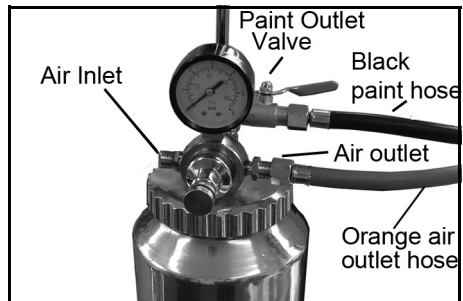
OPERATION

This CPP2B paint container is designed primarily for spraying oil and solvent based paint. Clarke International provides a range of spray guns which may be used with this container. Please see examples on page 11.



WARNING: ALWAYS CHECK TO ENSURE THE CONTAINER IS NOT UNDER PRESSURE BEFORE USE, BY CHECKING THE PRESSURE GAUGE AND OPENING THE AIR OUTLET VALVE.

1. Mix the paint to the correct viscosity for spraying according to the manufacturer's instructions and strain it into the paint canister through a fine mesh filter. When mixing the paint, make sure that you have enough thinners left to clean the spray gun after use.
2. Unscrew the lid and fill the paint container with paint. Replace the lid and tighten securely.
3. Connect the air supply hose to the air inlet, (using a suitable in-line connector if required).
4. Connect the red air hose from the spray gun, to the air outlet.



5. Connect the paint hose (black) from the spray gun to the paint outlet.
6. Ensure the pressure regulator knob is turned fully anticlockwise, then turn on the air supply from your compressor/air supply to the paint container.
7. Turn the pressure regulator knob clockwise to pressurise the container until the required pressure is achieved.
 - Working pressure will depend upon the consistency of the paint, but must never exceed 35 psi. If the paint is sluggish at this pressure, it should be thinned.
8. Turn on the paint outlet valve.
9. Finally, begin spraying and make adjustments to the spray pattern according to the spray gun instructions.
10. The paint should be agitated by gentle shaking at regular intervals during use to ensure consistency and avoid colour differences due to the paint settling in the container.
11. Set the spray pattern and fluid flow using the adjustment screws on the spray gun.

SPECIFICATION

Container Volume	2 Litres
Air Inlet Connection	¼" BSP
Hose Length	1700 mm
Paint Hose Dia	3/8" BSP
Safety Valve Working Pressure	35 psi
Weight	1.51 kg
Height x Diameter	322 x 129 mm

MAINTENANCE

It is essential to clean the equipment thoroughly after use. Dried paint in the outlet and the hoses will undermine the performance of the equipment.

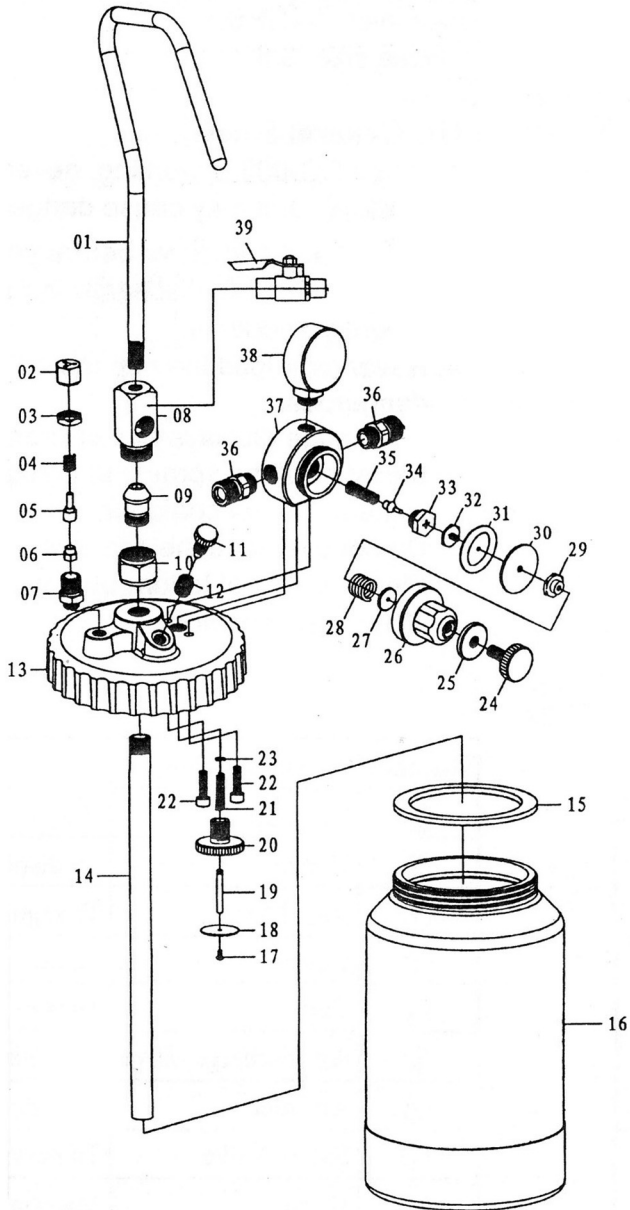
CLEANING PROCEDURE

1. Turn off the air supply to the container.
2. Open the air outlet valve.
3. Discharge the remaining pressure in the spraygun such that any paint sprayed will land harmlessly on newspaper or similar.
4. Hold the spray gun and hose above the level of the container and pull the spray gun trigger to allow any paint in the hose to drain back into the container.
5. Empty the container of paint, before cleaning it thoroughly with solvent, depending upon the type of paint being sprayed. Use a small bristle brush and solvent to wash off accumulated paint.
6. With the container and other components cleaned thoroughly, pour clean solvent or other cleaning agent into the container.
7. Replace the lid.
8. Turn on the air supply to the container and pull the spray gun trigger. Keep it pressed until only clean solvent or other cleaner is discharged from the spray gun.
9. Allow solvent or other cleaner to drain back into the container.
10. Finally, empty the container and dry all components thoroughly. Store in a clean, dry place.

SAFETY CHECKS

1. Periodically before use, pressurise the container to 35 psi (2.5 bar) in order to test the safety valve. If it does not release at this pressure, do not use the container. Have the valve replaced immediately.
2. Inspect both the air and paint hoses for wear or damage periodically, and replace if necessary. Do not use damaged or leaking hoses.

PARTS DIAGRAM



PARTS LIST

No	DESCRIPTION
1	Handle
2	Adjusting Screw
3	Locking Nut
4	Spring
5	Valve
6	Valve Gasket
7	Valve Seat
8	Connector
9	Olive
10	Connector
11	Vent Thumb Screw
12	Spring
13	Container Cap
14	Pick-up Tube
15	Gasket
16	Container
17	Screw
18	Round Film Gasket
19	Tube
20	Brass Screw Fixing
21	Spring

No	DESCRIPTION
22	Socket Screws
23	Stopper
24	Air Adjusting Screw
25	Locking Nut
26	Air Regulator Body
27	Spring Seat
28	Spring
29	Sealing Nut
30	Laminated Gasket
31	Plastic Gasket
32	Flat Nut
33	Needle Seat
34	Air Needle
35	Spring
36	Hose Connector
37	Gauge Seat
38	Pressure Gauge
39	Shut-off Valve
40	Fluid Hose
41	Air Hose

CLARKE SPRAY GUNS

PGF14 Spray Gun:
suitable for high class
top quality refinishing



AP14GF Spray Gun: a professional
gravity fed high volume, low pressure
spray gun



AP17 Spray Gun: a professional
HVLP spray gun with separate
controls for varying spray pattern
and paint volume



SuperPro Spray Gun:
a top quality professional
spray gun for high class
refinishing



ProGun: a professional
spray gun with external
paint mix, available with
different nozzle sizes



AP15 Spray Gun:
a high volume, low
pressure gun

A wide variety of Clarke spray guns can be used with this pressurised paint container and are available from your local stockist.

A SELECTION FROM THE VAST RANGE OF

Clarke®

QUALITY PRODUCTS



AIR COMPRESSORS

From DIY to industrial, Plus air tools, spray guns and accessories.

GENERATORS

Prime duty or emergency standby for business, home and leisure.

POWER WASHERS

Hot and cold, electric and engine driven - we have what you need

WELDERS

Mig, Arc, Tig and Spot. From DIY to auto/industrial.

METALWORKING

Drills, grinders and saws for DIY and professional use.

WOODWORKING

Saws, sanders, lathes, mortisers and dust extraction.

HYDRAULICS

Cranes, body repair kits, transmission jacks for all types of workshop use.

WATER PUMPS

Submersible, electric and engine driven for DIY, agriculture and industry.

POWER TOOLS

Angle grinders, cordless drill sets, saws and sanders.

STARTERS/CHARGERS

All sizes for car and commercial use.

PARTS & SERVICE:

0208 988 7400

Parts Enquiries

Parts@clarkeinternational.com

Servicing & Technical Enquiries

Service@clarkeinternational.com

SALES: UK 01992 565333 or Export 00 44 (0)1992 565335

Clarke INTERNATIONAL Hemnall Street, Epping, Essex CM16 4LG
www.clarkeinternational.com